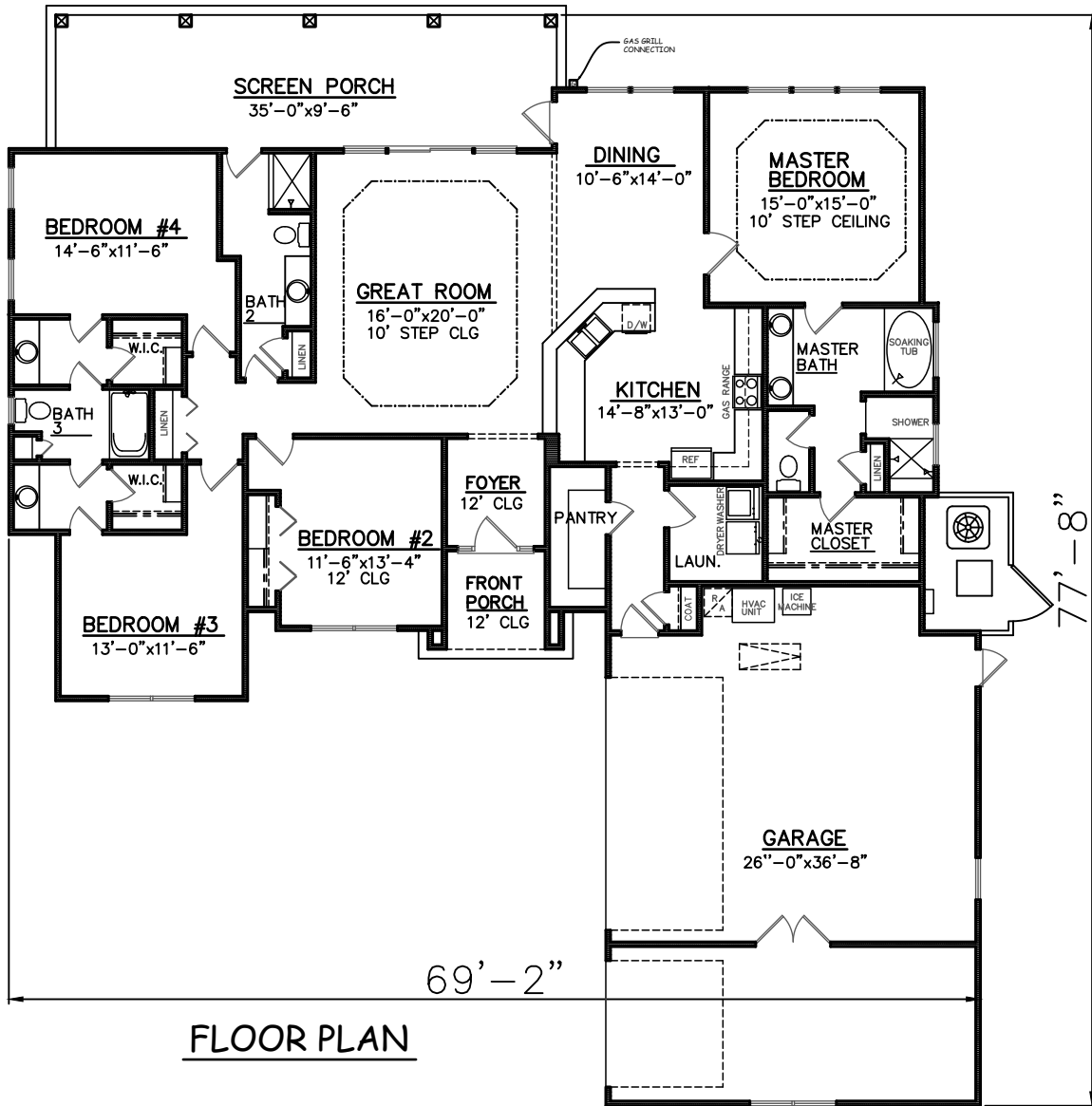




**FRONT ELEVATION**



**FLOOR PLAN**

*Josselyn Homes, Inc.*

Heated Sq. Ft.: 2316  
 Garage: 950  
 Front Porch: 54  
 Back Porch: 337  
 Total Sq. Ft. Under Roof: 3657

P.O. BOX 5793  
 ST. MARY'S, Georgia 31558  
 (912) 222-5595  
 www.josselynhomes.com

ALL INFORMATION SHOWN  
 DEEMED RELIABLE BUT  
 NOT GUARANTEED.

THESE ARE RENDERINGS ONLY.  
 ACTUAL FLOOR PLANS &  
 ELEVATIONS MAY VARY FROM  
 WORKING DRAWINGS.

2023\laurel marsh lot 11