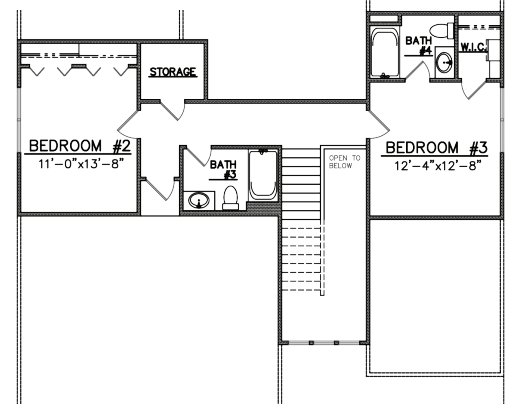
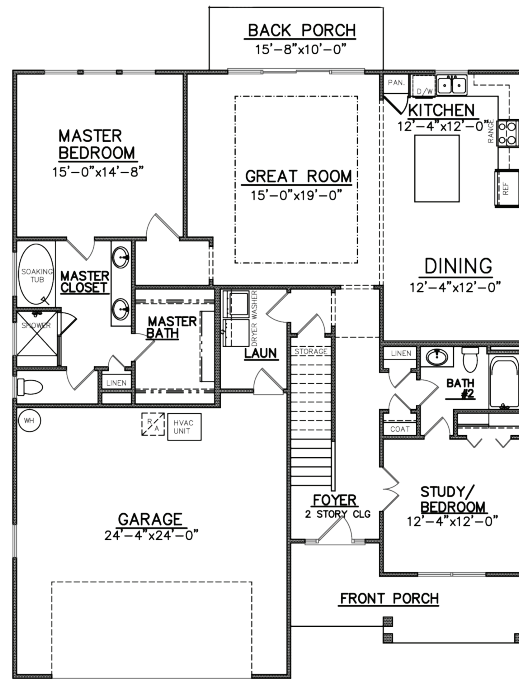




The 2344 Plan

JOSSELYN HOMES

- FOUR BEDROOM, FOUR BATHROOM
- 2,344 SQFT (PER BUILDERS PLANS)
- OPEN CONCEPT LIVING W/ SPLIT FLOOR PLAN
- SOLID SURFACE COUNTERTOPS THROUGHOUT
- CROWN MOLDING
- 9FT CEILINGS
- CUSTOM CABINETRY W/ SOFT CLOSE HINGES
- STAINLESS STEEL APPLIANCE PACKAGE
- EVP THROUGHOUT MAIN LIVING AREA, CARPET IN BEDROOMS
- MAINTENANCE FREE STUCCO OR LAP CONCRETE SIDING
- SELLER HOLDS A REAL ESTATE LICENSE
- SQFT & ELEVATIONS MAY VARY, PER BUILDERS PLANS



Construction by Josselyn Homes, Inc.

W.E. Josselyn III
 C: 912.576.9424
 Joss@JosselynHomes.com

P.O. Box 5793
 St. Mary's, Georgia 31558

Builder is Licensed Real Estate Agent in GA



JOSSELYN
 HOMES

We can build in your neighborhood or ours. Ask us about our many floor plans or visit JosselynHomes.com for more information.

Voted Camden County's Best Builder/Contractor for 2013 and 2014.

